

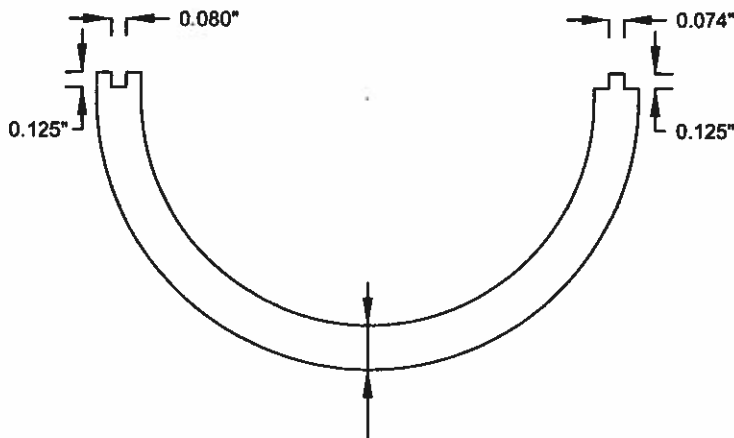
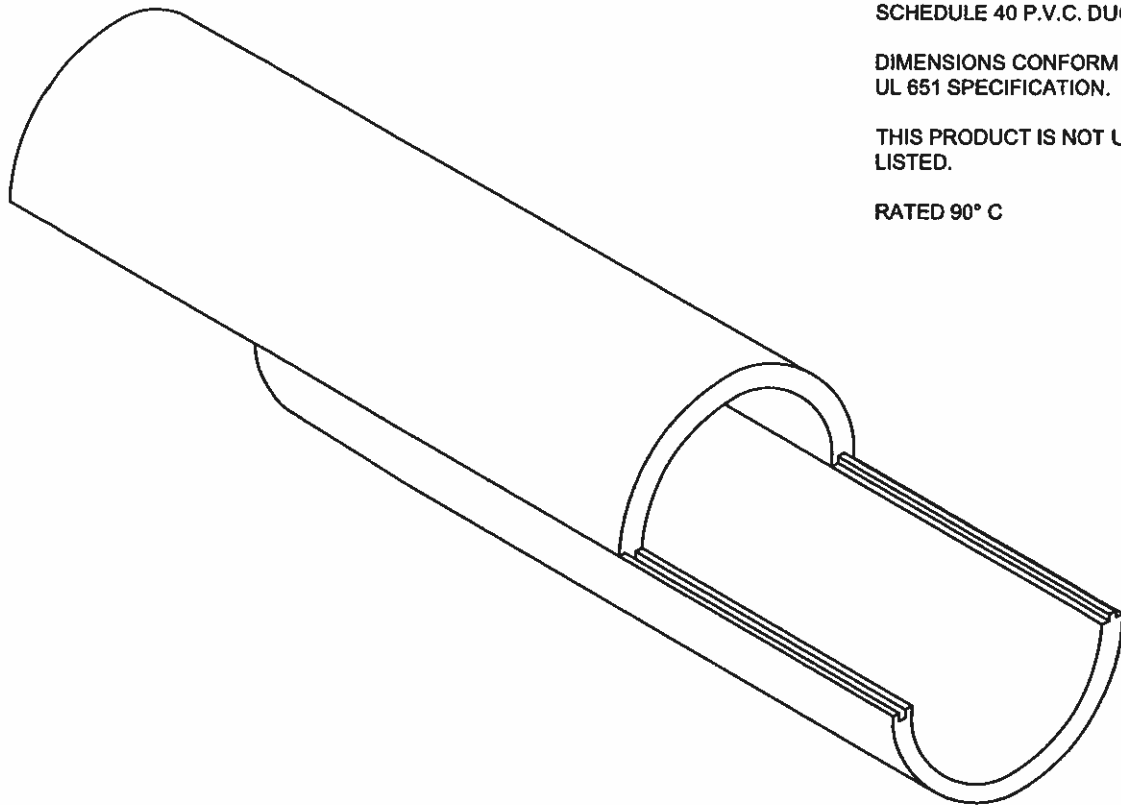
**SPLIT DUCT (LOCKING TONGUE & GROOVE)
10 FT. LENGTHS**

SPLIT DUCT IS USED TO COVER
EXISTING UNDERGROUND CABLES
OR REPAIRING DAMAGED DUCT
WITHOUT CUTTING OR RESPLICING
EXISTING CABLES. MADE OF
SCHEDULE 40 P.V.C. DUCT.

DIMENSIONS CONFORM TO
UL 651 SPECIFICATION.

THIS PRODUCT IS NOT UL
LISTED.

RATED 90° C



MINIMUM WALL THICKNESSES

3" D.B.	0.216"
4" D.B.	0.237"
5" D.B.	0.258"
6" D.B.	0.280"

PROVIDE BAND CLAMPS OR STRAPS
TO SECURE DUCT IN PLACE.

PROVIDE PVC CEMENT AT ALL JOINTS
TO INSURE A SEALED, STABLE UNIT.

OFFSET JOINTS LONGITUDINALLY
TO PRODUCE A RIGID, STABLE UNIT.

PROVIDE ALL NECESSARY COUPLINGS,
SWEEPS, AND ADAPTERS ASSOCIATED
WITH THIS PRODUCT.



APPROVED:
Brinell Davis
CHIEF, TRANSPORTATION ENGINEERING
AND CONSTRUCTION DIVISION
Frank Murphy
DIRECTOR, DEPARTMENT OF TRANSPORTATION

**CITY OF BALTIMORE
DEPARTMENT OF TRANSPORTATION
CONDUIT SECTION**

SPLIT DUCT

ISSUED	REVISED	REVISED
2 / 2017		
STANDARD NO. BC 802.03-4		
SCALE : NONE	SHEET 4 OF 4	